



ETA-Danmark A/S
Göteborg Plads 1
DK-2150 Nordhavn
Tel. +45 72 24 59 00
Internet www.etadanmark.dk

Authorised and notified
according to Article 29 of the
Regulation (EU)
No 305/2011 of the European
Parliament and of the Council
of 9 March 2011



European Technical Assessment ETA-24/1229 of 2024/12/16

I General Part

Technical Assessment Body issuing the ETA and designated according to Article 29 of the Regulation (EU) No 305/2011: ETA-Danmark A/S

Trade name of the construction product:

INTU FR MORTAR

Product family to which the above construction product belongs:

Fire Stopping and Sealing Product:
• Penetration Seals

Manufacturer:

ALFASEAL GROUP Sp. z o.o.
Ul. Kineskopowa 1
PL-05-500 Piaseczno
Poland

Manufacturing plant:

Plant MPA4

This European Technical Assessment contains:

17 pages including 1 annex which form an integral part of the document

This European Technical Assessment is issued in accordance with Regulation (EU) No 305/2011, on the basis of:

EAD 350454-00-1104, Firestopping and Fire Sealing Products, Penetration Seals

This version replaces:

Translations of this European Technical Assessment in other languages shall fully correspond to the original issued document and should be identified as such.

Communication of this European Technical Assessment, including transmission by electronic means, shall be in full. However, partial reproduction may be made, with the written consent of the issuing Technical Assessment Body. Any partial reproduction has to be identified as such.

Table of Contents

I.	SPECIFIC PARTS OF THE EUROPEAN TECHNICAL ASSESSMENT.....	4
1	Technical description of the product.....	4
2	Specification of the intended uses of the product in accordance with the applicable European . Assessment Document (Herein after EAD): ETAG 026-2.....	5
3	Performance of the product and references to the methods used for its assessment.....	6
4	ASSESSMENT AND VERIFICATION OF CONSTANCY OF PERFORMANCE (HEREINAFTER AVCP) SYSTEM APPLIED, WITH REFERENCE TO ITS LEGAL BASE	7
5	Technical details necessary for the implementation of the AVCP system, as provided for in the applicable EAD	7
	ANNEX A – Resistance to Fire Classification – INTU FR MORTAR.....	8
A.1	Flexible or rigid wall constructions with wall thickness of minimum 100 mm	8
A.1.1	INTU FR MORTAR penetration seal in flexible or rigid walls min. 100 mm thick	8
A.2	Rigid wall constructions with wall thickness of minimum 150 mm.....	10
A.2.1	INTU FR MORTAR penetration seal in rigid walls min. 150 mm thick	10
A.3	Rigid floor constructions with wall thickness of minimum 150 mm	12
A.3.1	INTU FR MORTAR penetration seal in rigid floors min. 150 mm thick	12
A.3.2	INTU FR MORTAR penetration seal in rigid floors min. 150 mm thick	15

I. SPECIFIC PARTS OF THE EUROPEAN TECHNICAL ASSESSMENT

1 Technical description of the product

- 1) The INTU FR MORTAR is a gypsum based mortar material, used to reinstate the fire resistance performance of wall and floor constructions where they have been provided with apertures for the penetrations of multiple services.
- 2) The INTU FR MORTAR is supplied as a dry material, and is mixed with water to the required ratio prior to installation.
- 3) INTU FR MORTAR when mixed is self-supporting in a wall orientation, with no permanent backing material required. In a floor INTU FR MORTAR is poured onto a structure comprising 60mm x 60mm x 6mm steel angle cassette system, which supports a 50mm thick Mineral Fibre Board (140kg/m³).
- 4) The applicant has submitted a written declaration that the product and/or constituents of the product contains no substances which have been classified as dangerous according to Directive 67/548/EEC and Regulation (EC) No. 1272/2008 and listed in the 'indicative list on dangerous substances' of the EGDS – taking into account the installation conditions of the construction product and the release scenarios resulting from there.

In addition to the specific clauses relating to dangerous substances contained in this European Technical Assessment, there may be other requirements applicable to the products falling within its scope (e.g. transposed European legislation and national laws, regulations and administrative provisions). In order to meet the provisions of the Construction Products Regulation, these requirements need also to be complied with, when and where they apply.

- 5) The use category of INTU FR MORTAR in relation to BWR 3 (Hygiene, health and environment) is IA1, S/W3

2 Specification of the intended uses of the product in accordance with the applicable European Assessment Document (Hereinafter EAD): ETAG 026-2

Detailed information and data is given in Annex A.

The intended use of system INTU FR MORTAR is to reinstate the fire resistance performance of flexible wall, rigid wall and rigid floor constructions, where they are penetrated by services.

- 1) The specific elements of construction that the system INTU FR MORTAR may be used to provide a penetration seal in, are as follows:
 - Flexible walls: The wall must have a minimum thickness of 100 mm and comprise steel studs lined on both faces with minimum 2 layers of 12.5 mm thick boards.
 - Rigid walls: The wall must have a minimum thickness of 100 mm and comprise concrete, aerated concrete or masonry, with a minimum density of 650 kg/m³.
 - Rigid floors: The floor must have a minimum thickness of 150 mm and comprise concrete, or aerated concrete, with a minimum density of 650 kg/m³.

.

The supporting construction must be classified in accordance with EN 13501-2 for the required fire resistance period.
- 2) The system INTU FR MORTAR may be used to provide a penetration seal with specific supporting constructions and substrates (for details see Annex A).
- 3) The provisions made in this European Technical Assessment are based on an assumed working life of the INTU FR MORTAR of 25 years, provided that the conditions laid down in the manufacturers datasheet and instructions for the packaging/transport/storage/installation/use/repair are met. The indications given on the working life cannot be interpreted as a guarantee given by the producer or the Technical Assessment Body but are to be regarded only as a means for choosing the right products in relation to the expected economically reasonable working life of the works.
- 4) Type Y₂: intended for use at temperatures below 0°C, but with no exposure to rain nor UV. Includes lower use categories.

3 Performance of the product and references to the methods used for its assessment

Product-type: Bag/Pillow	Intended use: Penetration Seal
Basic Requirement	Performance
BWR 2 Safety in case of fire	
Reaction to fire	Class A1
Resistance to fire	Annex A
BWR 3 Hygiene, health and environment	
Air permeability (material property)	No performance assessed
Water permeability (material property)	No performance assessed
Release of dangerous substances	No performance assessed
BWR 4 Safety in use	
Mechanical resistance and stability	No performance assessed
Resistance to impact/movement	No performance assessed
Adhesion	No performance assessed
BWR 5 Protection against noise	
Airborne sound insulation	No performance assessed
BWR 6 Energy economy and heat retention	
Thermal properties	No performance assessed
Water vapour permeability	No performance assessed
General aspects relating to fitness for use	
Durability and serviceability	Y ₂

4 ASSESSMENT AND VERIFICATION OF CONSTANCY OF PERFORMANCE (HEREINAFTER AVCP) SYSTEM APPLIED, WITH REFERENCE TO ITS LEGAL BASE

According to the decision 1999/454/EC – Commission Decision of date 22nd June 1999 on the procedure for attesting the conformity of construction products pursuant to Article 20(2) of Council Directive 89/106/EEC as regards fire stopping, fire sealing and fire protective products, published in the Official Journal of the European Union (OJEU) L178/52 of 14/07/1999, see <http://eur-lex.europa.eu/JOIndex.do> of the European Commission¹, as amended, the system(s) of assessment and verification of constancy of performance (see Annex V to Regulation (EU) No 305/2011) given in the following table(s) applies (apply).

Product(s)	Intended use(s)	Level(s) or class(es)	System(s)
Fire stopping and Fire Sealing Products	For fire compartmentation and/or fire protection or fire performance	Any	1

5 Technical details necessary for the implementation of the AVCP system, as provided for in the applicable EAD

Technical details necessary for the implementation of the AVCP system are laid down in the control plan deposited at ETA-Danmark A/S prior to CE marking

Issued in Copenhagen on 2024-12-16 by



Thomas Bruun

Managing Director, ETA-Danmark

¹ Official Journal of the European Communities L178/52 of 14/7/1999

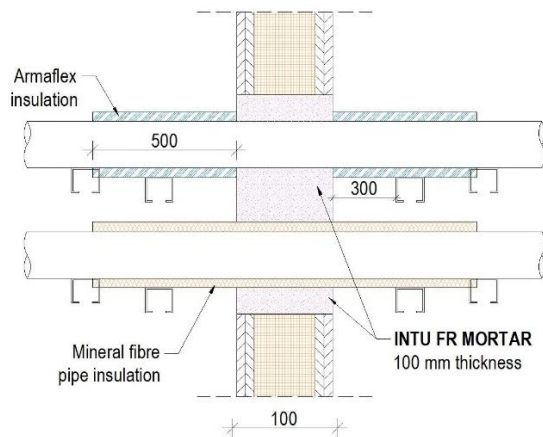
ANNEX A – Resistance to Fire Classification – INTU FR MORTAR

A.1 Flexible or rigid wall constructions with wall thickness of minimum 100 mm

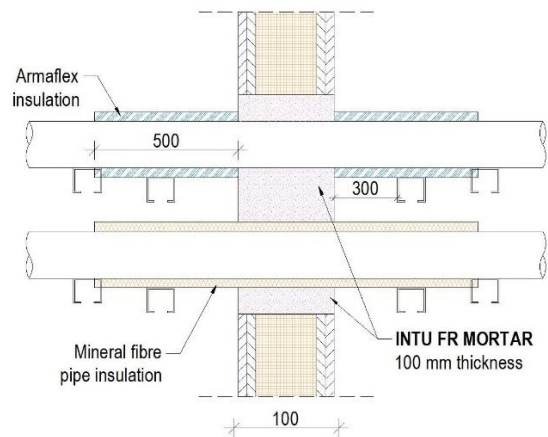
A.1.1 INTU FR MORTAR penetration seal in flexible or rigid walls min. 100 mm thick

Penetration Seal: Metallic pipes (insulated and un-insulated) and various cables (insulated and un-insulated) penetrating through a flexible or rigid wall construction. INTU FR MORTAR installed centrally within the wall to full depth. INTU FR MORTAR is applied to seal around the services and gaps of service penetration.

Construction details:



Construction details:



A.1.1.1

Services	Armaflex Nitrile Rubber Service Insulation	Classification
Copper pipe 22-38 mm Ø, 1 – 14.2mm wall	19 mm x 500 mm (LI)	EI 120 C/U
Copper pipe 93 mm Ø, 1.6 – 14.2mm wall	25 mm x 500 mm (LI)	
Steel pipe 19mm Ø, 1.2 – 14.2mm wall	19 mm x 500 mm (LI)	
Steel pipe 38mm Ø, 1.2 – 14.2mm wall	25 mm x 500 mm (LI)	
Steel pipe 193.7mm Ø, 1.2 – 14.2mm wall	25 mm x 500 mm (LI)	E 120 C/U EI 60 C/U
Steel pipe 193.7mm Ø, 1.2 – 14.2mm wall	25 mm (CI)	E 120 C/U EI 90 C/U
Copper pipe 22 mm Ø, 1 – 14.2mm wall	None	E 120 C/U EI 90 C/U
Copper pipe 38 mm Ø, 1.2 – 14.2mm wall	None	E 120 C/U EI 15 C/U
Copper pipe 93 mm Ø, 1.6 – 14.2mm wall	None	E 120 C/U EI 30 C/U
Steel pipe 19mm Ø, 1.2 – 14.2mm wall	None	EI 120 C/U
Steel pipe 38mm Ø, 1.2 – 14.2mm wall	None	E 120 C/U EI 60 C/U
Steel pipe 193.7mm Ø, 1.2 – 14.2mm wall	None	E 120 C/U EI 15 C/U
Services	Rock Mineral Wool Service Insulation	Classification
Copper pipe 22-93 mm Ø, 1 – 14.2mm wall	25 mm (CI)	EI 120 C/U

'CI' = continued interrupted

'LI' = local interrupted

Services	Insulwrap Aluminium Foil Face Insulation (LI)	Classification
Electrical cables up to 21 mm diameter	None	E 120 EI 60
Electrical cables up to 80 mm diameter	None	E 120 EI 45
Electrical cables up to 80 mm diameter	5mm thick by 300mm long	EI 120
Steel cable trays up to 150 x 50 x 1.5 mm	None	E 120 EI 60
Up to 21mm \varnothing telecomm cables in bundles of up to 100 mm diameter	5mm thick by 300mm long	EI 120
Non-sheathed wire up to 24 mm \varnothing		
Steel cable trays up to 300 x 25 x 1.5 mm		
Up to 21mm \varnothing telecomm cables in bundles of up to 100 mm diameter	None	EI 120
Non-sheathed wire up to 24 mm \varnothing		E 120 EI 90
Steel cable trays up to 300 x 25 x 1.5 mm		EI 120

'CI' = continued interrupted

'LI' = local interrupted

Specific Cables*	Insulwrap Aluminium Foil Face Insulation (LI)	Classification
C1, C2, C3 electrical cables	None	E 240 EI 60
A1, A2, A3, D3 electrical cables		E 240 EI 90
D1, D2 electrical cables		E 240 EI 120

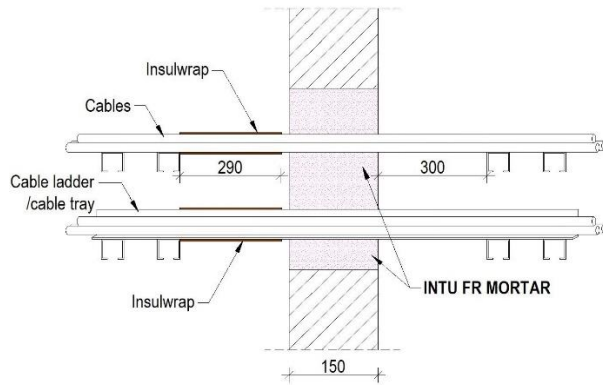
* as defined in EN 1366-3: 2009

A.2 Rigid wall constructions with wall thickness of minimum 150 mm

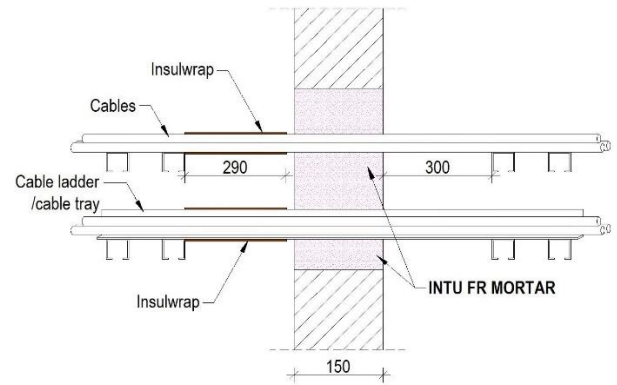
A.2.1 INTU FR MORTAR penetration seal in rigid walls min. 150 mm thick

Penetration Seal: Metallic pipes (insulated and un-insulated) and various cables (insulated and un-insulated) penetrating through a rigid wall construction. INTU FR MORTAR installed centrally within the wall to full depth. INTU FR MORTAR is applied to seal around the services and gaps of service penetration.

Construction details:



Construction details:



A.2.1.1

Services	Armaflex Nitrile Rubber Service Insulation	Classification
Steel pipe 38mm Ø, 1.9 – 14.2mm wall	25 mm (CI)	EI 240 C/U
Steel pipe 38 - 194mm Ø, 5 – 14.2mm wall		
Copper pipe 22mm Ø, 1 – 9mm wall	20 mm (CI)	E 240 C/U EI 90 C/U
Copper pipe 42 mm Ø, 1.2 – 14.2mm wall		
Copper pipe 42 - 89mm Ø, 1.6 – 14.2mm wall,	25 mm (CI)	EI 240 C/U
Steel pipe 19mm Ø, 1.2 – 9mm wall	20 mm by 500 mm (LI)	
Steel pipe 38mm Ø, 1.9 – 14.2mm wall	25 mm by 500 mm (LI)	E 240 C/U EI 30 C/U
Steel pipe 38 - 194mm Ø, 5 – 14.2mm wall		
Copper pipe 22mm Ø, 1 – 9mm wall	20 mm by 500 mm (LI)	E 240 C/U EI 120 C/U
Copper pipe 42mm Ø, 1.2 – 14.2mm wall		
Copper pipe 42 - 89mm Ø, 1.6 – 14.2mm wall	25 mm by 500 mm (LI)	E 240 C/U EI 60 C/U
Steel pipe 19mm Ø, 1.2 – 9mm wall	20 mm by 500 mm (LI)	
Steel pipe 19mm Ø, 1.2 – 9mm wall	20 mm by 500 mm (LI)	EI 240 C/U

'CI' = continued interrupted

'LI' = local interrupted

Services	Insulwrap Aluminium Foil Face Insulation (LI)	Classification
Steel pipe 38mm \varnothing , 1.9 – 14.2mm wall	None	E 240 C/U EI 180 C/U
Steel pipe 38 - 194mm \varnothing , 5 – 14.2mm wall		E 240 C/U EI 15 C/U
Copper pipe 22mm \varnothing , 1 – 9mm wall		E 240 C/U EI 90 C/U
Electrical cables up to 21 mm \varnothing		E 240 EI 60
Electrical cables up to 80 mm \varnothing		E 240 EI 45
Non-sheathed wire up to 17 mm \varnothing		E 240 EI 60
Non-sheathed wire 18-24 mm \varnothing		E 240 EI 45
Up to 21mm \varnothing telecomm cables in bundles of up to 100 mm diameter		E 180 EI 120
Electrical cables up to 21 mm \varnothing	5mm thick by 300mm long	E 240 EI 120
Electrical cables up to 80 mm \varnothing		E 240 EI 90
Non-sheathed wire up to 17 mm \varnothing		EI 240
Non-sheathed wire 18-24 mm \varnothing		E 240 EI 180
Up to 21mm \varnothing telecomm cables in bundles of up to 100 mm diameter		E 180 EI 120

'CI' = continued interrupted

'LI' = local interrupted

Specific Cables*	Insulwrap Aluminium Foil Face Insulation (LI)	Classification
C1, C3, D1, D3 electrical cables	None	E 240 EI 60
C2 electrical cables		E 240 EI 90
A1, A2, A3, D2 electrical cables		E 240 EI 120
C2, D1, D3 electrical cables	5mm thick by 300mm long	E 240 EI 120
C3 electrical cables		E 240 EI 180
A1, A2, A3, D2 electrical cables		EI 240

* as defined in EN 1366-3: 2009

A.3 Rigid floor constructions with wall thickness of minimum 150 mm

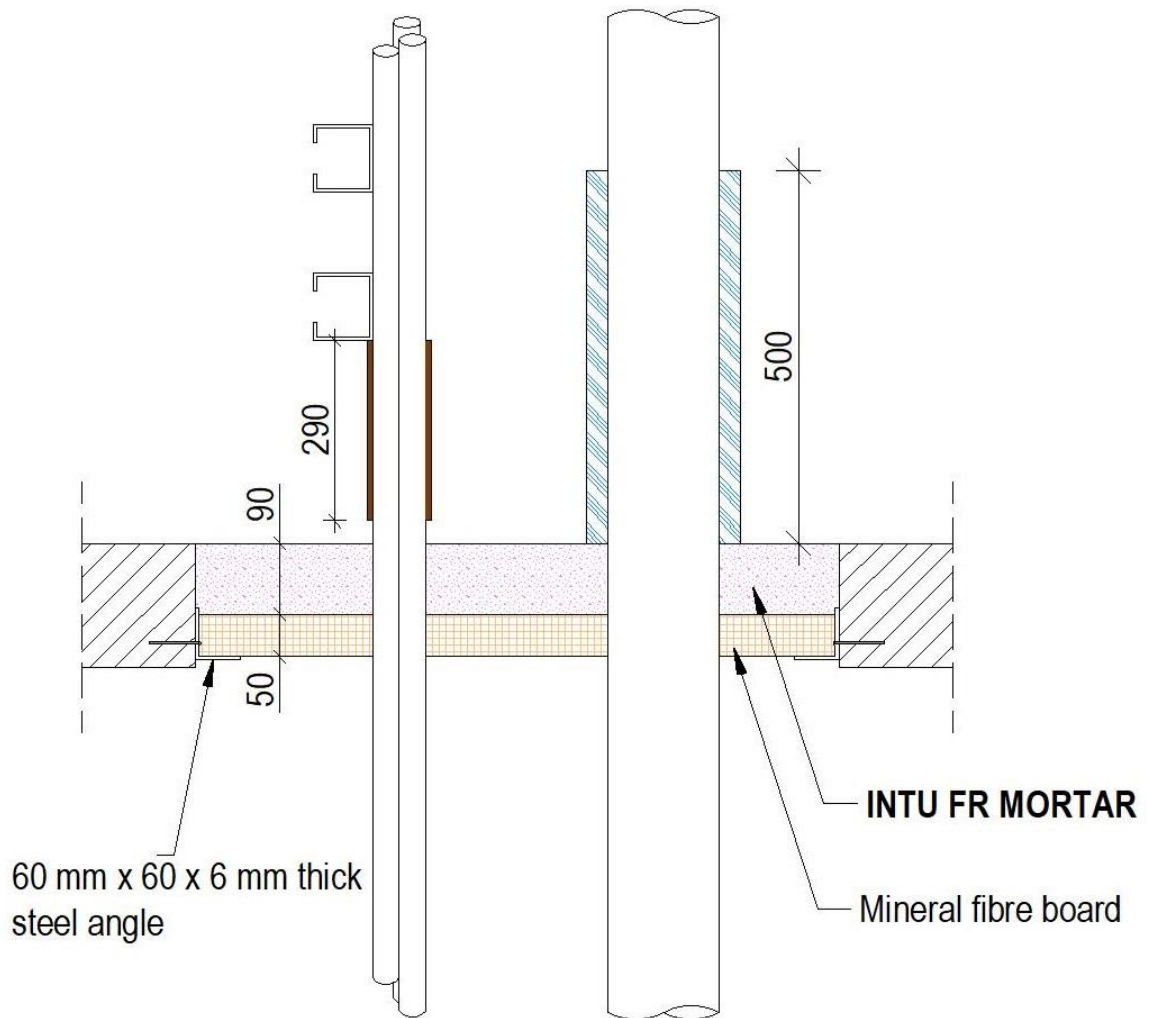
A.3.1 INTU FR MORTAR penetration seal in rigid floors min. 150 mm thick

Penetration Seal: Metallic pipes (insulated and un-insulated) and various cables (insulated and un-insulated) penetrating through a rigid floor construction. INTU FR MORTAR installed flush to the top of the floor and to a minimum 90 mm depth, maximum seal size 1400 x 1200 mm.

A steel support and mineral fibre board structure is installed as a shutter and a structural support for the INTU FR MORTAR seal

INTU FR MORTAR is poured around the services and gaps of service penetration

Construction details:



A.3.1.1

Services	Armaflex Nitrile Rubber Service Insulation	Classification
Steel pipe 19mm \varnothing , 1.2 – 9mm wall	20 mm (CI)	E 240 C/U EI 180 C/U
Steel pipe 38mm \varnothing , 1.9 – 14.2mm wall	25 mm (CI)	
Steel pipe 38 - 194mm \varnothing , 5 – 14.2mm wall	20 mm (CI)	EI 240 C/U
Copper pipe 22mm \varnothing , 1 – 9mm wall		
Copper pipe 42mm \varnothing , 1.6 – 14.2mm wall	25 mm (CI)	E 240 C/U EI 60 C/U
Copper pipe 42 - 89mm \varnothing , 1.6 – 14.2mm wall		
Steel pipe 19mm \varnothing , 1.2 – 9mm wall	20 mm by 500 mm (LI)	E 240 C/U
Steel pipe 38mm \varnothing , 1.9 – 14.2mm wall	25 mm by 500 mm (LI)	EI 180 C/U
Steel pipe 38 - 194mm \varnothing , 5 – 14.2mm wall		E 240 C/U EI 60 C/U
Copper pipe 22mm \varnothing , 1 – 9mm wall	20 mm by 500 mm (LI)	E 240 C/U EI 45 C/U
Copper pipe 42 mm \varnothing , 1.6 – 14.2mm wall	25 mm by 500 mm (LI)	EI 240 C/U
Copper pipe 42 - 89mm \varnothing , 1.6 – 14.2mm wall		E 240 C/U
Steel pipe 19mm \varnothing , 1.2 – 9mm wall	None	EI 30 C/U
Steel pipe 38 - 194mm \varnothing , 5 – 14.2mm wall		E 240 C/U EI 15 C/U
Copper pipe 22mm \varnothing , 1 – 9mm wall		EI 240 C/U
Copper pipe 42mm \varnothing , 1.6 – 14.2mm wall		E 240 C/U EI 90 C/U
Copper pipe 42 - 89mm \varnothing , 1.6 – 14.2mm wall		E 240 C/U EI 15 C/U
Electrical cables up to 21 mm \varnothing		E 240 EI 90
Electrical cables up to 80 mm \varnothing		E 240 EI 60
Non-sheathed wire up to 24 mm \varnothing		E 240 EI 30
Up to 21mm \varnothing telecom cables in bundles of up to 100 mm diameter		E 240 EI 60
Services	Insulwrap Aluminium Foil Face Insulation (LI)	Classification
Electrical cables up to 21 mm \varnothing	5mm thick by 300mm long	E 240 EI 120
Electrical cables up to 80 mm \varnothing		E 240 EI 90
Non-sheathed wire up to 24 mm \varnothing		E 120 EI 60
Up to 21mm \varnothing telecom cables in bundles of up to 100 mm diameter		E 120 EI 90
Steel or Copper conduits and tubes up to 16 mm \varnothing	None	E 120 EI 15
Plastic (any) conduits and tubes up to 16 mm \varnothing		E 90 EI 15

‘CI’ = continued interrupted

‘LI’ = local interrupted

Specific Cables*	Insulwrap Aluminium Foil Face Insulation (LI)	Classification
A2 electrical cables	None	E 240 EI 120
A1, A2, A3, D2 electrical cables	5mm thick by 300mm long	E 240 EI 120

* as defined in EN 1366-3: 2009

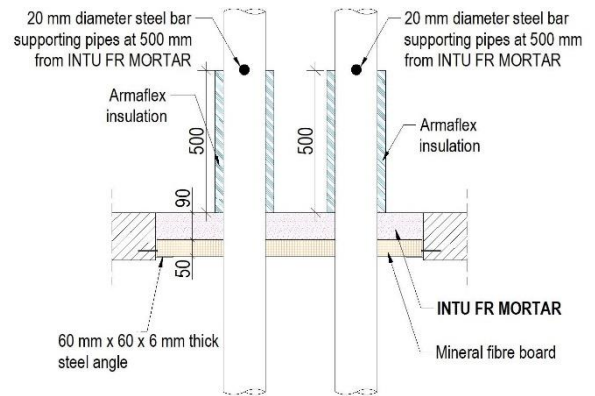
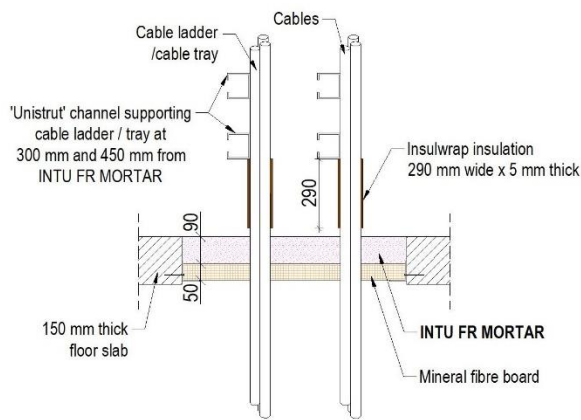
A.3.2 INTU FR MORTAR penetration seal in rigid floors min. 150 mm thick

Penetration Seal: Metallic pipes (insulated and un-insulated) and various cables (insulated and un-insulated) penetrating through a rigid floor construction. INTU FR MORTAR installed flush to the top of the floor and to a minimum 50 mm depth, maximum seal size 700 x 600 mm.

A mineral fibre board structure is installed as a shutter and a structural support for the INTU FR MORTAR seal

INTU FR MORTAR is poured around the services and gaps of service penetration

Construction details:



A.3.2.1

Services	Armaflex Nitrile Rubber Service Insulation (optional top face only)	Classification
Steel pipe 19mm \varnothing , 1.0 – 14.2mm wall	19 mm by 500 mm (LI)	EI 120 C/U
Steel pipe 40mm \varnothing , 1.2 – 14.2mm wall		
Steel pipe 194mm \varnothing , 8.0 – 14.2mm wall	25 mm by 500 mm (LI)	E 120 C/U EI 30 C/U
Copper pipe 22mm \varnothing , 1 – 9mm wall	19 mm by 500 mm (LI)	EI 120 C/U
Copper pipe 42mm \varnothing , 1.2 – 14.2mm wall		
Copper pipe 89mm \varnothing , 1.6 – 14.2mm wall	25 mm by 500 mm (LI)	E 120 C/U EI 30 C/U
Copper pipe 22-89mm \varnothing , 1.2 – 14.2mm wall		E 120 C/U
Steel pipe 19mm \varnothing , 1.0 – 14.2mm wall		E 120 C/U EI 60 C/U
Steel pipe 40mm \varnothing , 1.2 – 14.2mm wall	None	E 120 C/U EI 30 C/U
Steel pipe 194mm \varnothing , 8.0 – 14.2mm wall		E 120 C/U EI 15 C/U
Steel pipe 19mm \varnothing , 1.0 – 14.2mm wall	19 mm (CI)	EI 120 C/U
Steel pipe 40mm \varnothing , 1.2 – 14.2mm wall		EI 120 C/U
Steel pipe 194mm \varnothing , 8.0 – 14.2mm wall	25 mm (CI)	E 120 C/U EI 30 C/U
Copper pipe 22mm \varnothing , 1 – 9mm wall	19 mm (CI)	EI 120 C/U
Copper pipe 42mm \varnothing , 1.2 – 14.2mm wall		
Copper pipe 89mm \varnothing , 1.6 – 14.2mm wall	25 mm (CI)	
Services	Insulwrap Aluminium Foil Face Insulation (LI)	Classification
Electrical cables up to 21 mm \varnothing	5mm thick by 300mm long	E 120 EI 90
Electrical cables up to 80 mm \varnothing		E 90 EI 60
Non-sheathed wire up to 24 mm \varnothing		E 120 EI 90
Up to 21mm \varnothing telecomm cables in bundles of up to 100 mm diameter		EI 90
Steel ladders and non-perforated trays up to 500 x 60 x 1.5 mm	None	EI 120
Steel perforated trays up to 500 x 60 x 1.5 mm		EI 90
Electrical cables up to 21 mm \varnothing		E 120 EI 30
Electrical cables up to 80 mm \varnothing		E 90
Non-sheathed wire up to 24 mm \varnothing		EI 15
Up to 21mm \varnothing telecomm cables in bundles of up to 100 mm diameter		E 90 EI 30

'CI' = continued interrupted

'LI' = local interrupted

Specific Cables*	Insulwrap Aluminium Foil Face Insulation (LI)	Classification
C3, D1, D3 electrical cables	None	E 240 EI 30
C1, C2, D2 electrical cables		E 240 EI 60
A1, A3, electrical cables		E 240 EI 90
A2 electrical cables		E 240 EI 120
B, C1, C2, D1, D3 electrical cables	5mm thick by 300mm long	E 240 EI 90
A1, A2, A3, D2 electrical cables		E 240 EI 120

* as defined in EN 1366-3: 2009